

June 2012

New Dual Active Sheep Wormer - Startect

The first dual active worming product for sheep has been released, under the trade name Startect.

Dual active wormers have important benefits in delaying the impact of anthelmintic resistance (AR) on sheep performance.

Startect contains a new novel group 5 wormer called derquantel ("purple" group) plus Abamectin, a member of the group 3-ML wormer group ("clear" group).



Resistance status on your farm

To ensure that you gain maximum benefit from the resistance delaying potential of a dual active wormer it is important to follow

the SCOPS guidelines:

1. Knowing the resistance status on your farm, in particular to 3-ML group; a simple drench test can be done to determine the levels of anthelmintic resistance on your farm. Pre-existing resistance must be low if you are to maximise the potential to delay further resistance.
2. Leave a proportion of the worm population unexposed to wormer (in refugia!). Leaving some animals untreated can have a huge impact on the rate at which resistance develops. Untreated animals could include, mature animals carrying singles and large well grown single lambs showing no signs of scour
3. Another SCOPS guideline is to delay moving animals to clean pasture by 4-5 days following dosing.

Dosing Guidelines for Startect.

- Startect is suitable for routine dosing of ewes and lambs- don't keep in reserve for when other wormers have failed.
- Startect would be very useful used at the end of the drenching season to clear out any worms that have survived earlier treatments.
- Startect is suitable as a single dose

quarantine treatment for incoming sheep. After quarantine treatment, hold animals off pasture for 24-48 hours and then turn onto contaminated pasture.

- Startect is an oral drench with a dose rate of 1ml per 5kg and a meat withdrawal of 14 days.
- Startect is a POM product only available through your vet.



An interesting case!

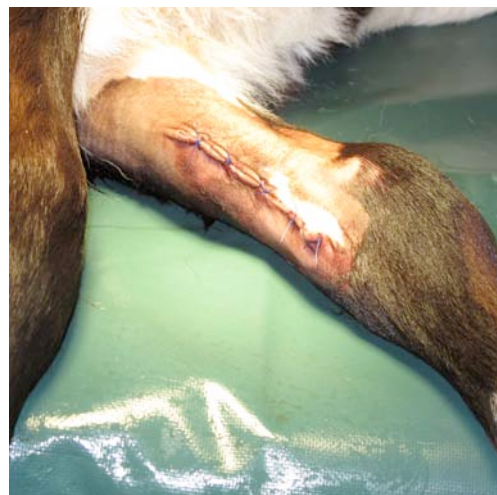
We were recently presented with a calf with an extra limb attached to the inside of its left foreleg. As the bottom of this useless leg was getting traumatised and potentially infected, it was elected that we would remove it.

The calf was brought in to the surgery at Uttoxeter where the offending appendage was successfully removed!

Before



And after.....



Update on Cepravin DC

The manufacturers of Cepravin will no longer be supplying the 120 and 160 tube herd packs.

The range has been rationalised to include a standard box of 20 and a herd pack of 200 tubes. The price per tube however, remains unchanged!